



ROCKJUMPER

Worldwide Birding Adventures

Montana & Wyoming

Greater Yellowstone in Winter

25th February to 29th February 2024 (5 days)



American Bison by Kate Ochsman

There is nowhere in North America as iconic as Yellowstone National Park. Towering mountains, spewing geysers, vast forests and valleys harbouring the highest megafauna density on the continent make this a must-visit destination for anyone wanting to experience the classic American West. But the

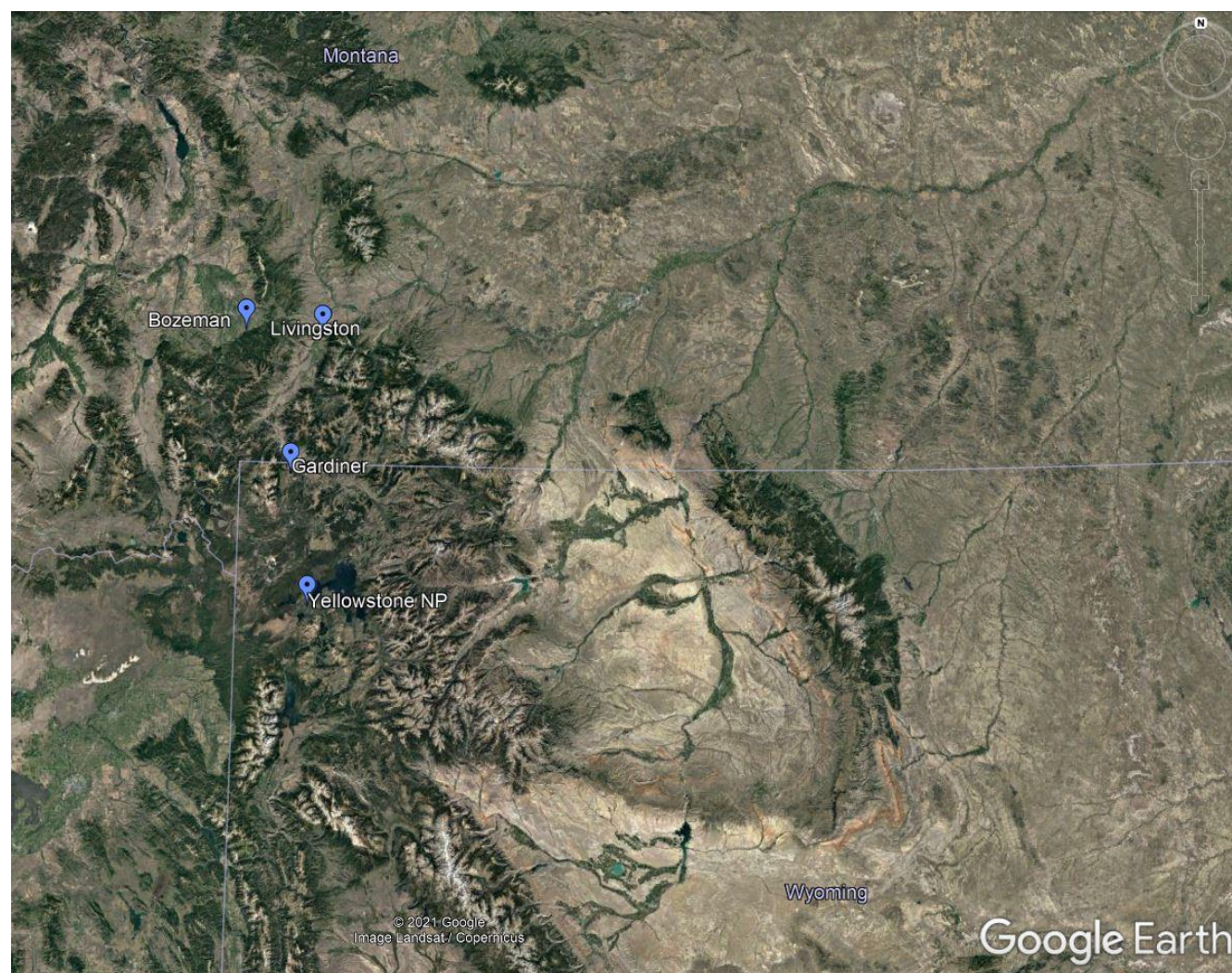
Greater Yellowstone Ecosystem, as it is known by locals and researchers, is much more than what is found within the National Park's borders, despite its enormous size. The ecosystem includes huge, pristine prairies, alpine crags and meadows, near-arid desert, and the most diverse and lovely scenery one could hope for.

THE TOUR AT A GLANCE...

THE ITINERARY

Day 1	Arrive in Bozeman, transfer to Livingston
Day 2	White Sulphur Springs & Paradise Valley
Day 3	Yellowstone National Park - Old Faithful & Steamboat Spring geysers
Day 4	Yellowstone National Park - Lamar Valley
Day 5	Lamar Valley and final departures.

TOUR ROUTE MAP...



THE TOUR IN DETAIL...

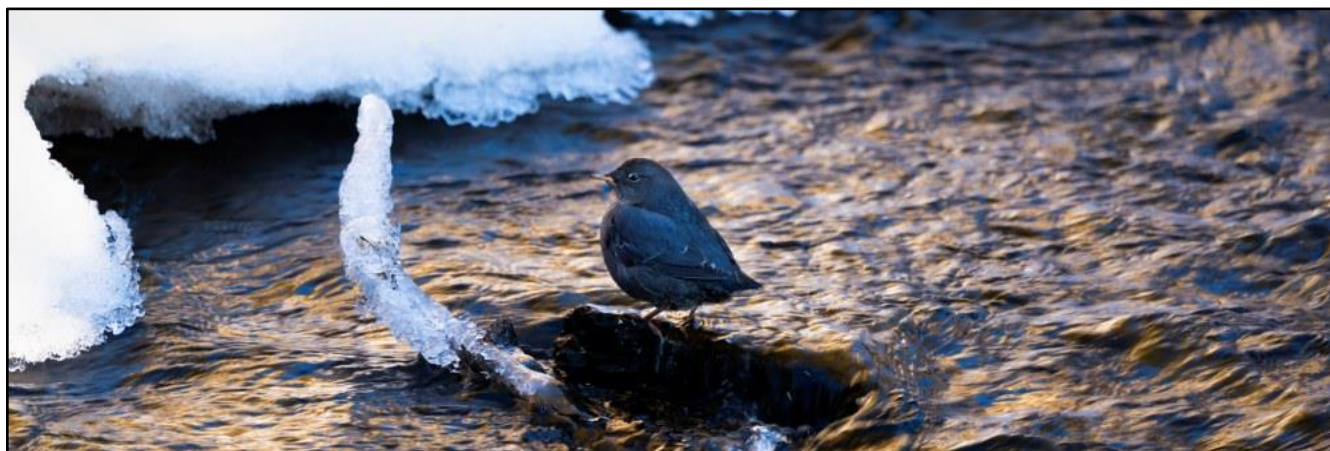
Day 1 - Arrival into Bozeman. A quick visit to local feeders in the Bozeman area to see Grey-crowned and Black Rosy Finches, Common Redpoll, Evening Grosbeak, and more! We will also have a short walk through the local Bozeman Cemetery, which is packed with conifers of all sorts. The Cemetery often hosts Red and White-winged Crossbills, both! For a few years, a Great Grey Owl delighted visitors to the adjacent Public Library lawn! Overnight in Livingston.



Howling Gray Wolf by Kate Ochsman

Day 2 - White Sulphur Springs & Paradise Valley.

This morning we will head North to White Sulphur Springs in search of Gyrfalcon. Though not seen daily, most years both a white and grey morph Gyrfalcon hunt the fields nearby, and we will do our best to locate this enigmatic, special Falcon today, along with some other nice species like Sharp-tailed and Greater Sage Grouse, American Tree Sparrow, and Lapland Longspur. In the afternoon we will bird our way down the beautiful Paradise Valley, to Gardiner. En route we will visit a local private ranch with open water kept warm by the volcanic activity of Yellowstone itself. Trumpeter Swan, Tundra Swan, Barrow's Goldeneye, Common Goldeneye, and a number of other great waterfowl species persist here, along with Merlin, Prairie Falcon, and Rough-legged Hawk. With luck, we will encounter our first flocks of the gorgeous Bohemian Waxwing. A stop at some local friendly bird feeding stations should add some nice winter finches like Pine Grosbeak and both Redpolls, as well as Clark's Nutcracker, both White-breasted and Red-breasted Nuthatches, Brown Creeper, and several woodpeckers. Overnight Gardiner.



American Dipper by Kate Ochsman



Day 3 - Yellowstone National Park.

Today we will venture into the heart of Yellowstone National Park via Snowcoach! This is the most amazing way to see the park in Winter, including enjoying Old Faithful and Steamboat Spring geysers erupting cold, crystalline, and beautiful in the freezing temperatures. It is also our opportunity to take in some of the most iconic images of Yellowstone - snow-covered, thick-furred, Bison emerging from the steamy valleys. Other wildlife we are likely to encounter today include Elk, Pronghorn, and Bighorn Sheep. Though today is mostly devoted to non-avian wonders of the world's first national park, we will likely run into some of the commoner Winter species like Townsend's Solitaire, Steller's Jay, and Bohemian Waxwing. We will do our best to track down individuals of the few resident Great Grey Owls, though we cannot trek for them and will leave it to serendipity to find one from the road. Overnight Gardiner.



Pine Grosbeak by Kate Ochsman

Day 4 - Lamar Valley. Today will be spent entirely in the famed Lamar Valley of Yellowstone, in search of some of the more special birds of Winter including Boreal and Northern Pygmy Owls. We will work the road system in search of Yellowstone's most iconic species, the Gray Wolf. Some 35 years after their re-introduction into the ecosystem, wolves are frequently encountered in the Winter as they hunt for Elk and young Bison. The Gray Wolf numbers 94 individuals, as of now, plus several litters of pups will be grown members of their respective packs by Winter. Hopefully not only will we encounter the wolves, but will likely enjoy some fascinating behaviour. Other wildlife we will try to see today include River Otter, Pine Marten, Red Fox, Coyote, and more! Overnight Gardiner.



Bighorn Sheep by Kate Ochsman



Day 5 - Lamar Valley and final departures. This morning we will return to the Lamar Valley, and Tower area, in search of wolves and other wildlife, and owls, before heading back towards Bozeman.

FINANCIAL ARRANGEMENTS:

Tour dates, prices, single supplement rates, approximate flight costs and spaces available for this tour are displayed on our website. Please see under IMPORTANT NOTES below.

This includes:

- All meals from dinner on day 1 to breakfast on 5;
- All lodgings;
- Ground transportation;
- Extra activities mentioned in the itinerary;
- Reserve entrance fees; and
- All guiding services (including tips for local guides and services.)

The tour fee does not include:

- Visa fees;
- **ANY** flights (see above);
- Any additional beverages;
- Special gratuities; and
- Telephone calls, laundry and other items of a personal nature.

Single Supplement: The single supplement cost for this tour will be charged if you wish to have single accommodation. If RBL cannot provide you with a rooming partner for these nights although you choose to share, the single supplement will become applicable. We will make all reasonable efforts to ensure that a rooming partner is found if you do wish to share.

IMPORTANT NOTES:

a) Due to constantly fluctuating exchange rates, we quote our tours in 4 currencies. The tour price is however fixed only in the currency printed in bold, and the actual cost in the other currencies listed will be adjusted according to prevailing exchange rates at the time of final invoicing (usually 4 months before the tour.) The same applies to approximate flight and single supplement rates, which are also quoted in the respective fixed currency.

b) Rates are based upon group tariffs; if the tour does not have sufficient participants, a small party supplement will have to be charged.

c) Furthermore, these costs are subject to unforeseen increases in tour related costs and may have to be adjusted as a result.

d) Lastly, we may be forced to change or alter the itinerary and / or the designated Rockjumper leader/s at short or no notice due to unforeseen circumstances; please be aware that we will attempt to adhere as close to the original program as possible.

Tiping: As noted above, gratuities (drivers, hotel staff, restaurants etc) are included on this tour. However, this does NOT include your Rockjumper leader/s. If, therefore, you feel that he/they have given you excellent service, it is entirely appropriate to tip them.



Special notes:

- Yellowstone in the winter is freezing! Temperatures typically range from a high of 26°F (-3°C) to an average low of 4°F(-16°C). Snow fall or rain is expected on average 11-13 days of the month.

ARRIVAL & DEPARTURE DETAILS:

This tour **does not** include **ANY** airfares. The tour will depart from Bozeman International Airport (IATA: BZN). Please arrive into Bozeman by 13:00 to enjoy the late afternoon birding. The tour will conclude at Bozeman International Airport (IATA: BZN) on day 5 by mid-day. Flights can be arranged to depart from 14:00.

The above information in respect of arrivals and departures is a guide only. Precise arrival and departure information will be sent to you in your **Tour Confirmation** package once the tour has been officially confirmed. If you wish to arrive early and/or depart late and would like assistance in this regard, kindly contact the Rockjumper office.

FLIGHTS:

Bozeman International Airport (IATA: BZN) is the main port of entry for this tour. **Please DO NOT book any flights until you have consulted the Rockjumper office for confirmation on the status of the tour.**

