



ROCKJUMPER

Worldwide Birding Adventures

South Africa

Kruger Extension II

21st to 25th March 2018 (5 days)

Trip Report



African Barred Owlet by Gareth Robbins

Trip report compiled by Tour Leader: Gareth Robbins

Tour Summary

After our collection at the airport, we packed the tour vehicle at our guesthouse in Kempton Park. We managed to squeeze in sightings of Red-headed Finches at the bird feeder and then finally made our way to the Kruger National Park. Along the way, we travelled through coal mining areas in the



Klipspringer Pair by Gareth Robbins

Highveld, where we had a few sightings in the form of Amur Falcons, Pied Starlings, Southern Masked Weavers and Black-winged Kites. We finally made our way down into the Lowveld, getting views of White Storks before arriving in the town of Nelspruit. We got our supplies for the next four nights and made our way to the Paul Kruger Gate, bypassing White River and Hazyview. Once we arrived in the Kruger National Park, we already started to see a few new birds, such as European and Lilac-breasted Rollers, and an unexpected look at a Leopard sleeping in a tree quite far off the road was a nice surprise. We checked in and met our expert Kruger guide, Dirk! After which we made our way back out to the park, and this time we were in an open game viewer. We the re-visited the Leopard in the same tree, but this time the Leopard had moved to the other side of the tree. We then continued on our route and managed to get another sighting of a Leopard. We also saw a few new birds, such as Long-tailed Paradise Whydah, Brown-headed Parrots, Bearded Woodpecker and Green Wood Hoopoes, before needing to get back to Skukuza Rest Camp before the gates closed.

The rain had finally caught up with us; however, this did not deter us from heading out into the National Park. As the gates opened, we headed in an easterly direction, where we stopped for a bird party consisting of Southern Black Tit, Blue Waxbills and the beautiful Orange-breasted Bushshrike. Further down the road, some excellent spotting gave us views of a pair of Southern White-faced Owls and a couple of White-backed Vultures. We then continued south into an area where there were open grasslands. Here we saw a couple of Magpie Shrikes and Lilac-breasted Rollers. We stopped at a lookout overlooking the plains and again we had another bird party, consisting of Jameson's Firefinch, White-throated Robin-Chat, Dusky Indigobird, great looks at stunning African Green Pigeon and excellent close views of a Pearl-spotted Owlet. From the viewpoint, we also saw a couple of African Elephants, two White Rhinoceros and an African Fish



Female Chinspot Batis by Gareth Robbins

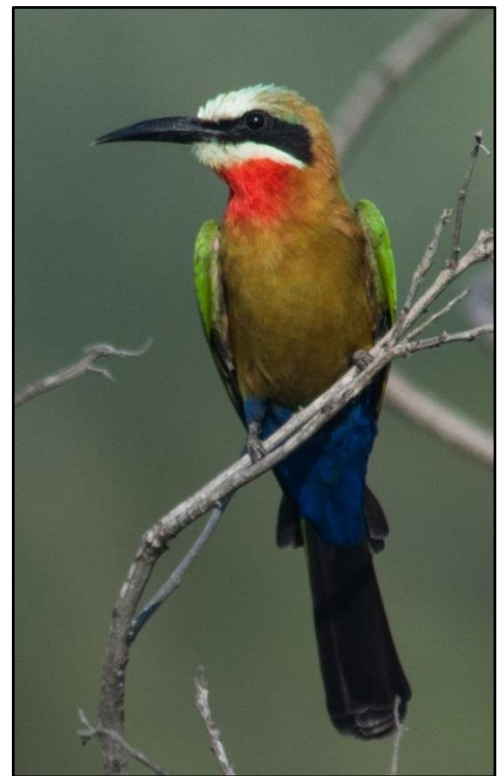
Eagle. We then travelled down to Lower Sabie Rest Camp and got a good close view of a very young male Lion sitting along the roadside, looking a bit lost. We tried to look for the other Lions, only managing to come across a large journey of Giraffes. We then had a relaxing brunch in the rest camp



Retz's Helmetshrike by Gareth Robbins

and were entertained by the resident Western Barn Owl in the restaurant. After lunch, we came across another large bird party in the nearby picnic site. The party consisted of excellent close views of Chinspot Batises, Green-backed Camaroptera, White-throated and White-browed Robin-Chats, Grey Go-Away-Birds, Black-collared Barbet, Collared and White-bellied Sunbirds and a pair of Grey-headed Bushshrikes. We then headed back to Skukuza Rest Camp and joined the sunset drive. Unfortunately, this turned out to be another wet drive, but we still managed to see plenty of Spotted Hyaenas, as well as some young Elephant bulls sparring, Common Genet and two Spotted Eagle-Owls, making it a worthwhile trip in the end.

Today we packed our luggage into the trailer and visited some key areas nearby. This paid off greatly, as we found a mother Cheetah and her two youngsters moving across the open plains. We also had a few more good looks at a family herd of African Elephants and a group of White-crested Helmetshrikes. We stopped at a waterhole and here we managed to get a great look at the pretty Greater Painted-snipe, a pair of Malachite Kingfishers, as well as a couple of Hippopotamus. We then visited the Lake Panic Bird hide, where we saw Black Crake, plenty of Water Thick-knees, African Fish Eagle and a Pied Kingfisher beating a sizeable fish to death on a dead tree stump. We stopped at the Skukuza Golf Club for breakfast, getting views of White-breasted Cormorants and stunning male Scarlet-chested Sunbird feeding in a Cape Honeysuckle tree. We then made our way south towards Berg-en-dal Rest Camp, where we would be spending the next two nights. Along the way, we stopped for a family of Southern Ground Hornbills walking alongside the road. We stopped briefly at Afsal picnic site, and here we got some close views of Green Wood Hoopoes. A hyaena made a brief visit to the picnic site, giving everybody a fright. We continued south towards Berg-en-dal Rest Camp, getting a rare sighting of two Leopards in a tree with a kill. Further along the road, we were very fortunate to see an immature Martial Eagle and a Tawny Eagle. We checked into our beautiful rest camp for the next two nights and welcomed the spacious units provided for us. We then went out on a very productive afternoon drive, getting looks at



White-fronted Bee-eater by Gareth Robbins

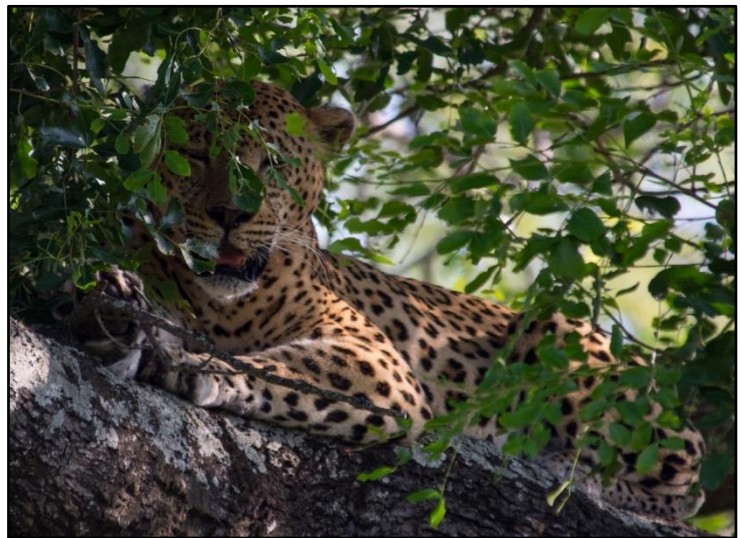
a pair of African Hawk-Eagles, as well as Little Egret and Knob-billed Ducks. The highlight of the day was seeing a few White Rhino in the road, and we got another Leopard sighting near the lodge.



Purple-crested Turaco by Gareth Robbins

the eventually meeting up with a Lioness and two younger male Lions. We then made a brief stop and headed back to Berg-en-dal Rest Camp for a delicious breakfast before commencing with a short afternoon walk. Even though it was not as warm, we had excellent views of a group of Retz's Helmetshrikes, two Purple-crested Turacos and a beautiful African Barred Owlet. We then said goodbye to Dirk and had a short break before heading out on an afternoon drive. The drive itself was very productive, we managed to get better views of the male Leopard in the tree and then we also got some great views of White-fronted and Little Bee-eaters, as well as good looks at Marabou Storks and a couple of Giraffe and White Rhinoceros. As soon as we parked the vehicle and got out, we managed to get a fantastic look at an Eastern Nicator sitting quietly in a small shrub near the parking area. *It was a lovely end to a great day!*

We started the morning a little later than usual, as we planned to do some birding around the camp. We started the morning with some Terrestrial Brownbuls feeding and calling near our chalets. We continued to follow the sunlight through the rest camp and came across a few more Purple-crested Turacos, as well as Grey-headed Bushshrike, close looks at Yellow-breasted Apalis, Ashy Flycatchers and views of African Grey Hornbills feeding on some fruiting trees. We then made our way down to the dam, and here we had excellent views of the noisy Trumpeter Hornbills and close looks at a Levillant's Cuckoo! We checked



Leopard in tree by Gareth Robbins

out of the Berg-en-dal Rest Camp and made our way out through Malelane Gate, spotting a few African Elephants, White Rhinoceros and Giraffe on the way out! On our way back to Johannesburg, we managed to see a couple of Southern Red Bishops, White Stork and a Long-tailed Widowbird! We finally arrived at OR Tambo International Airport and wished each other farewell!

Annotated List of species recorded

Note: Number in brackets () indicate number of days on the tour the species was recorded.
List powered through the report generator of our partner iGoTerra.

Birds (179 in total: 177 seen, 2 heard)

Nomenclature and taxonomy follows Gill, F and D Donsker (Eds). 2017. IOC World Bird List (v 7.3).

Status codes: **E** = Endemic, **NE** = Near-endemic, **I** = Introduced

IUCN codes: **CR** = Critically endangered, **EN** = Endangered, **VU** = Vulnerable, **EW** = Extinct in the Wild, **NT** = Near Threatened, **DD** = Data Deficient

Ducks, Geese, and Waterfowl Anatidae

- White-faced Whistling Duck** *Dendrocygna viduata*
(2) 1 Kruger NP (Southern Parts) 22.3 and 1 Kruger NP (Southern Parts) 23.3.
- Knob-billed Duck** *Sarkidiornis melanotos*
(1) 1 Kruger NP (Southern Parts) 23.3.
- Egyptian Goose** *Alopochen aegyptiaca*
(4) 1 ALZU Petroport N4 21.3 and up to 1 Kruger NP (Southern Parts) 22-24.3.

Guineafowl Numididae

- Helmeted Guineafowl** *Numida meleagris*
(4) 1 Kruger NP - Skukuza / Lower Sabie Road 21.3 and up to 1 Kruger NP (Southern Parts) 22-24.3.

Pheasants, Grouse, and Allies Phasianidae

- Shelley's Francolin** *Scleroptila shelleyi shelleyi*
(1) 1 heard Kruger NP - Skukuza / Lower Sabie Road 22.3.
- Crested Francolin** *Dendroperdix sephaena sephaena*
(2) 1 Kruger NP - Skukuza / Lower Sabie Road 22.3 and 1 Kruger NP (Southern Parts) 24.3.
- Natal Spurfowl** *Pternistis natalensis natalensis*
(4) Up to 1 Kruger NP - Skukuza / Lower Sabie Road 21-23.3 and 1 Kruger NP (Southern Parts) 24.3.
- Swainson's Spurfowl** *Pternistis swainsonii swainsonii*
(3) 1 Kruger NP - Skukuza / Lower Sabie Road 21.3, 1 Kruger NP (Southern Parts) 22.3 and 1 Kruger NP (Southern Parts) 24.3.
- Harlequin Quail** *Coturnix delegorguei delegorguei*
(1) 1 heard Kruger NP (Southern Parts) 22.3.

Grebes Podicipedidae

- Little Grebe** *Tachybaptus ruficollis capensis*
(1) 1 ALZU Petroport N4 21.3.

Storks Ciconiidae**African Openbill***Anastomus lamelligerus lamelligerus*

(1) 1 Kruger NP (Southern Parts) 22.3.

Woolly-necked Stork (VU)*Ciconia episcopus microscelis*

(1) 1 Kruger NP (Southern Parts) 22.3.

White Stork*Ciconia ciconia ciconia*

(1) 1 Nelspruit 21.3.

Saddle-billed Stork*Ephippiorhynchus senegalensis*

(1) 1 Kruger NP (Southern Parts) 22.3.

Marabou Stork*Leptoptilos crumenifer*

(3) 1 Nelspruit 21.3, 1 Kruger NP (Southern Parts) 22.3 and 1 Kruger NP (Southern Parts) 24.3.

Ibises and Spoonbills Threskiornithidae**African Sacred Ibis***Threskiornis aethiopicus*

(1) 1 ALZU Petroport N4 21.3.

Hadada Ibis*Bostrychia hagedash hagedash*

(2) 1 ALZU Petroport N4 21.3 and 1 Kruger NP (Southern Parts) 22.3.

Hérons, Egrets, and Bitterns Ardeidae**Striated Heron***Butorides striata atricapilla*

(2) 1 Kruger NP (Southern Parts) 22.3 and 1 Kruger NP (Southern Parts) 23.3.

Western Cattle Egret*Bubulcus ibis*

(3) 1 ALZU Petroport N4 21.3, 1 Kruger NP (Southern Parts) 23.3 and 1 Kruger NP (Southern Parts) 24.3.

Grey Heron*Ardea cinerea cinerea*

(3) Up to 1 Kruger NP (Southern Parts) 22-24.3.

Black-headed Heron*Ardea melanocephala*

(1) 1 ALZU Petroport N4 21.3.

Goliath Heron*Ardea goliath*

(2) 1 Kruger NP (Southern Parts) 22.3 and 1 Kruger NP (Southern Parts) 23.3.

Great Egret*Ardea alba melanorhynchos*

(3) 1 Kruger NP - Skukuza / Lower Sabie Road 21.3, 1 Kruger NP (Southern Parts) 22.3 and 1 Kruger NP (Southern Parts) 23.3.

Little Egret*Egretta garzetta garzetta*

(1) 1 Kruger NP (Southern Parts) 23.3.

Hamerkop Scopidae**Hamerkop***Scopus umbretta umbretta*

(3) Up to 1 Kruger NP (Southern Parts) 22-24.3.

Cormorants and Shags Phalacrocoracidae**Reed Cormorant***Microcarbo africanus africanus*

(2) 1 Kruger NP (Southern Parts) 22.3 and 1 Kruger NP (Southern Parts) 23.3.

White-breasted Cormorant*Phalacrocorax lucidus*

(1) 1 Kruger NP - Skukuza / Lower Sabie Road 23.3.

Hawks, Eagles, and Kites Accipitridae

- Black-winged Kite** *Elanus caeruleus caeruleus*
 (3) 1 ALZU Petroport N4 21.3, 1 Kruger NP (Southern Parts) 22.3 and 1 Kruger NP (Southern Parts) 24.3.
- Hooded Vulture (EN)** *Necrosyrtes monachus*
 (1) 1 Kruger NP (Southern Parts) 24.3.
- White-backed Vulture (NT)** *Gyps africanus*
 (4) 1 Kruger NP - Skukuza / Lower Sabie Road 21.3 and up to 1 Kruger NP (Southern Parts) 22-24.3.
- Cape Vulture (VU)** *Gyps coprotheres*
 (2) 1 ALZU Petroport N4 21.3 and 1 Kruger NP (Southern Parts) 23.3.
- Lappet-faced Vulture (VU)** *Torgos tracheliotos tracheliotos*
 (1) 1 Kruger NP (Southern Parts) 24.3.
- Brown Snake Eagle** *Circaetus cinereus*
 (3) Up to 1 Kruger NP (Southern Parts) 22-24.3.
- Bateleur (NT)** *Terathopius ecaudatus*
 (2) 1 Kruger NP (Southern Parts) 22.3 and 1 Kruger NP (Southern Parts) 24.3.
- Martial Eagle (NT)** *Polemaetus bellicosus*
 (1) 1 Kruger NP (Southern Parts) 23.3.
- Wahlberg's Eagle** *Hieraaetus wahlbergi*
 (4) 1 Kruger NP - Skukuza / Lower Sabie Road 21.3 and up to 1 Kruger NP (Southern Parts) 22-24.3.
- Tawny Eagle** *Aquila rapax rapax*
 (1) 1 Kruger NP (Southern Parts) 23.3.
- African Hawk-Eagle** *Aquila spilogaster*
 (1) 1 Kruger NP (Southern Parts) 23.3.
- Lizard Buzzard** *Kaupifalco monogrammicus meridionalis*
 (1) 1 Kruger NP - Skukuza / Lower Sabie Road 23.3.
- Little Sparrowhawk** *Accipiter minullus minullus*
 (2) 1 Kruger NP - Skukuza / Lower Sabie Road 23.3 and 1 Kruger NP - Berg-en-Dal 24.3.
- African Fish Eagle** *Haliaeetus vocifer*
 (3) Up to 1 Kruger NP (Southern Parts) 22-24.3.
- Common Buzzard** *Buteo buteo vulpinus*
 (1) 1 ALZU Petroport N4 25.3.
- Jackal Buzzard** *Buteo rufofuscus*
 (1) 1 ALZU Petroport N4 25.3.

Bustards Otididae

- Red-crested Korhaan** *Lophotis ruficrista*
 (1) 1 Kruger NP (Southern Parts) 23.3.

Rails, Gallinules, and Coots Rallidae

- Black Crake** *Amaurornis flavirostra*
 (2) 1 Kruger NP (Southern Parts) 22.3 and 1 Kruger NP - Skukuza / Lower Sabie Road 23.3.
- Red-knobbed Coot** *Fulica cristata*
 (1) 1 ALZU Petroport N4 21.3.

Thick-knees *Burhinidae***Water Thick-knee***Burhinus vermiculatus vermiculatus*

(3) 1 Kruger NP - Skukuza / Lower Sabie Road 22.3, 1 Kruger NP - Skukuza / Lower Sabie Road 23.3 and 1 Kruger NP (Southern Parts) 24.3.

Stilts and Avocets *Recurvirostridae***Black-winged Stilt***Himantopus himantopus*

(1) 1 Kruger NP (Southern Parts) 22.3.

Plovers and Lapwings *Charadriidae***Blacksmith Lapwing***Vanellus armatus*

(4) 1 Kruger NP - Skukuza / Lower Sabie Road 21.3 and up to 1 Kruger NP (Southern Parts) 22-24.3.

White-crowned Lapwing*Vanellus albiceps*

(1) 1 Kruger NP (Southern Parts) 22.3.

Crowned Lapwing*Vanellus coronatus*

(1) 1 Kruger NP (Southern Parts) 24.3.

African Wattled Lapwing*Vanellus senegallus lateralis*

(2) 1 Kruger NP - Berg-en-Dal 23.3 and 1 Kruger NP (Southern Parts) 24.3.

Three-banded Plover*Charadrius tricollaris tricollaris*

(2) 1 Kruger NP (Southern Parts) 22.3 and 1 Kruger NP (Southern Parts) 23.3.

Painted-Snipes *Rostratulidae***Greater Painted-snipe***Rostratula benghalensis*

(1) 1 Kruger NP (Southern Parts) 23.3.

Jacanas *Jacanidae***African Jacana***Actophilornis africanus*

(2) 1 Kruger NP (Southern Parts) 22.3 and 1 Kruger NP - Skukuza / Lower Sabie Road 23.3.

Sandpipers and Allies *Scolopacidae***Wood Sandpiper***Tringa glareola*

(1) 1 Kruger NP (Southern Parts) 23.3.

Pigeons and Doves *Columbidae***Ring-necked Dove***Streptopelia capicola*

(2) 1 Kruger NP (Southern Parts) 22.3 and 1 Kruger NP (Southern Parts) 23.3.

Laughing Dove*Spilopelia senegalensis senegalensis*

(2) 1 Kruger NP - Skukuza / Lower Sabie Road 21.3 and 1 Kruger NP (Southern Parts) 22.3.

Emerald-spotted Wood Dove*Turtur chalcospilos*

(3) 1 Kruger NP (Southern Parts) 23.3, 1 Kruger NP (Southern Parts) 24.3 and 1 Kruger NP - Berg-en-Dal 25.3.

African Green Pigeon*Treron calvus delalandii*

(2) 1 Kruger NP (Southern Parts) 22.3 and 1 Kruger NP (Southern Parts) 24.3.

Turacos Musophagidae

- Purple-crested Turaco** *Tauraco porphyreolophus porphyreolophus*
 (2) 1 Kruger NP - Berg-en-Dal 24.3 and 1 Kruger NP - Berg-en-Dal 25.3.
- Grey Go-away-bird** *Corythaixoides concolor*
 (4) 1 Kruger NP - Skukuza / Lower Sabie Road 21.3 and up to 1 Kruger NP (Southern Parts) 22-24.3.

Cuckoos Cuculidae

- Burchell's Coucal** *Centropus burchellii burchellii*
 (1) 1 Kruger NP (Southern Parts) 22.3.
- Levaillant's Cuckoo** *Clamator levaillantii*
 (1) 1 Kruger NP - Berg-en-Dal 25.3.
- Jacobin Cuckoo** *Clamator jacobinus serratus*
 (1) 1 Kruger NP (Southern Parts) 22.3.

Barn-Owls Tytonidae

- Western Barn Owl** *Tyto alba*
 (2) 1 Kruger NP (Southern Parts) 22.3 and 1 Kruger NP (Southern Parts) 23.3.

Owls Strigidae

- Southern White-faced Owl** *Ptilopsis granti*
 (1) 1 Kruger NP (Southern Parts) 22.3.
- Spotted Eagle-Owl** *Bubo africanus africanus*
 (1) 1 Kruger NP - Skukuza / Lower Sabie Road 22.3.
- Pearl-spotted Owlet** *Glaucidium perlatum licua*
 (1) 1 Kruger NP (Southern Parts) 22.3.
- African Barred Owlet** *Glaucidium capense capense*
 (1) 1 Kruger NP - Berg-en-Dal 24.3.

Nightjars and Allies Caprimulgidae

- Fiery-necked Nightjar** *Caprimulgus pectoralis*
 (1) 1 Kruger NP - Berg-en-Dal 24.3.

Swifts Apodidae

- African Palm Swift** *Cypsiurus parvus*
 (3) Up to 1 Kruger NP (Southern Parts) 22-24.3.
- Little Swift** *Apus affinis*
 (3) 1 ALZU Petroport N4 21.3, 1 Kruger NP (Southern Parts) 22.3 and 1 Kruger NP (Southern Parts) 23.3.

Mousebirds Coliidae

- Speckled Mousebird** *Colius striatus*
 (2) 1 Kruger NP - Skukuza / Lower Sabie Road 21.3 and 1 Kruger NP (Southern Parts) 22.3.
- Red-faced Mousebird** *Urocolius indicus*
 (2) 1 Kruger NP (Southern Parts) 22.3 and 1 Kruger NP (Southern Parts) 23.3.

Rollers *Coraciidae***Lilac-breasted Roller***Coracias caudatus caudatus*

(5) 1 Kruger NP - Skukuza / Lower Sabie Road 21.3, up to 1 Kruger NP (Southern Parts) 22-24.3 and 1 Kruger NP - Berg-en-Dal 25.3.

European Roller (NT)*Coracias garrulus garrulus*

(4) 1 Kruger NP - Skukuza / Lower Sabie Road 21.3 and up to 1 Kruger NP (Southern Parts) 22-24.3.

Kingfishers *Alcedinidae***Brown-hooded Kingfisher***Halcyon albiventris*

(1) 1 Kruger NP (Southern Parts) 23.3.

Woodland Kingfisher*Halcyon senegalensis cyanoleuca*

(1) 1 Kruger NP - Berg-en-Dal 23.3.

Malachite Kingfisher*Corythornis cristatus cristatus*

(2) 1 Kruger NP (Southern Parts) 22.3 and 1 Kruger NP (Southern Parts) 23.3.

Pied Kingfisher*Ceryle rudis rudis*

(3) 1 Nelspruit 21.3, 1 Kruger NP (Southern Parts) 22.3 and 1 Kruger NP - Skukuza / Lower Sabie Road 23.3.

Bee-eaters *Meropidae***Little Bee-eater***Merops pusillus*

(1) 1 Kruger NP (Southern Parts) 24.3.

White-fronted Bee-eater*Merops bullockoides*

(3) 1 Kruger NP - Skukuza / Lower Sabie Road 22.3, 1 Kruger NP (Southern Parts) 23.3 and 1 Kruger NP (Southern Parts) 24.3.

European Bee-eater*Merops apiaster*

(5) 1 Kruger NP - Skukuza / Lower Sabie Road 21.3, 1 Kruger NP (Southern Parts) 22.3, 1 Kruger NP - Skukuza / Lower Sabie Road 23.3, 1 Kruger NP (Southern Parts) 24.3 and 1 Kruger NP - Berg-en-Dal 25.3.

Southern Carmine Bee-eater*Merops nubicoides*

(1) 1 Kruger NP - Skukuza / Lower Sabie Road 21.3.

Hoopoes *Upupidae***African Hoopoe***Upupa africana*

(1) 1 Kruger NP (Southern Parts) 24.3.

Wood Hoopoes and Scimitarbills *Phoeniculidae***Green Wood Hoopoe***Phoeniculus purpureus*

(3) 1 Kruger NP - Skukuza / Lower Sabie Road 21.3, 1 Kruger NP (Southern Parts) 23.3 and 1 Kruger NP (Southern Parts) 24.3.

Common Scimitarbill*Rhinopomastus cyanomelas*

(2) 1 Kruger NP (Southern Parts) 22.3 and 1 Kruger NP (Southern Parts) 24.3.

Ground Hornbills *Bucorvidae***Southern Ground Hornbill (VU)***Bucorvus leadbeateri*

(2) 1 Kruger NP (Southern Parts) 23.3 and 1 Kruger NP (Southern Parts) 24.3.

Hornbills *Bucerotidae***Southern Red-billed Hornbill***Tockus rufirostris*

(5) 1 Kruger NP - Skukuza / Lower Sabie Road 21.3, up to 1 Kruger NP (Southern Parts) 22-24.3 and 1 Kruger NP - Berg-en-Dal 25.3.

Southern Yellow-billed Hornbill*Tockus leucomelas leucomelas*

(4) 1 Kruger NP - Skukuza / Lower Sabie Road 21.3 and up to 1 Kruger NP (Southern Parts) 22-24.3.

African Grey Hornbill*Lophoceros nasutus epirhinus*

(5) 1 Kruger NP - Skukuza / Lower Sabie Road 21.3, up to 1 Kruger NP (Southern Parts) 22-24.3 and 1 Kruger NP - Berg-en-Dal 25.3.

Trumpeter Hornbill*Bycanistes bucinator*

(1) 1 Kruger NP (Southern Parts) 23.3.

African Barbets *Lybiidae***Acacia Pied Barbet***Tricholaema leucomelas*

(1) 1 Kruger NP (Southern Parts) 22.3.

Black-collared Barbet*Lybius torquatus torquatus*

(4) Up to 1 Kruger NP (Southern Parts) 22-24.3 and 1 Kruger NP - Berg-en-Dal 25.3.

Crested Barbet*Trachyphonus vaillantii vaillantii*

(3) Up to 1 Kruger NP (Southern Parts) 22-24.3.

Honeyguides *Indicatoridae***Lesser Honeyguide***Indicator minor minor*

(1) 1 Kruger NP (Southern Parts) 24.3.

Woodpeckers *Picidae***Bearded Woodpecker***Chloropicus namaquus*

(2) 1 Kruger NP - Skukuza / Lower Sabie Road 21.3 and 1 Kruger NP (Southern Parts) 24.3.

Cardinal Woodpecker*Dendropicos fuscescens*

(3) 1 Kruger NP (Southern Parts) 22.3, 1 Kruger NP (Southern Parts) 24.3 and 1 Kruger NP - Berg-en-Dal 25.3.

Falcons and Caracaras *Falconidae***Amur Falcon***Falco amurensis*

(3) 1 ALZU Petroport N4 21.3, 1 Kruger NP (Southern Parts) 22.3 and 1 Kruger NP (Southern Parts) 24.3.

Eurasian Hobby*Falco subbuteo subbuteo*

(1) 1 Kruger NP (Southern Parts) 23.3.

African & New World Parrots *Psittacidae***Brown-headed Parrot***Poicephalus cryptoxanthus cryptoxanthus*

(4) 1 Kruger NP - Skukuza / Lower Sabie Road 21.3 and up to 1 Kruger NP (Southern Parts) 22-24.3.

Wattle-eyes and Batises *Platysteiridae***Chinspot Batis***Batis molitor*

(3) Up to 1 Kruger NP (Southern Parts) 22-24.3.

Helmetshrikes and Allies Prionopidae**White-crested Helmetshrike** *Prionops plumatus*

(1) 1 Kruger NP - Skukuza / Lower Sabie Road 23.3.

Retz's Helmetshrike *Prionops retzii*

(2) 1 Kruger NP - Skukuza / Lower Sabie Road 23.3 and 1 Kruger NP - Berg-en-Dal 24.3.

Bushshrikes and Allies Malaconotidae**Grey-headed Bushshrike** *Malaconotus blanchoti*

(3) 1 Kruger NP (Southern Parts) 22.3, 1 Kruger NP - Berg-en-Dal 24.3 and 1 Kruger NP - Berg-en-Dal 25.3.

Brown-crowned Tchagra *Tchagra australis*

(2) 1 Kruger NP (Southern Parts) 22.3 and 1 Kruger NP - Skukuza / Lower Sabie Road 23.3.

Black-crowned Tchagra *Tchagra senegalus*

(3) 1 Kruger NP (Southern Parts) 22.3, 1 Kruger NP - Skukuza / Lower Sabie Road 23.3 and 1 Kruger NP (Southern Parts) 24.3.

Black-backed Puffback *Dryoscopus cubla*

(3) 1 Kruger NP - Skukuza / Lower Sabie Road 21.3, 1 Kruger NP (Southern Parts) 22.3 and 1 Kruger NP (Southern Parts) 24.3.

Brubru *Nilaus afer*

(1) 1 Kruger NP - Skukuza / Lower Sabie Road 23.3.

Shrikes Laniidae**Magpie Shrike** *Urolestes melanoleucus*

(4) 1 Kruger NP - Skukuza / Lower Sabie Road 21.3 and up to 1 Kruger NP (Southern Parts) 22-24.3.

Southern White-crowned Shrike *Eurocephalus anguitimens*

(1) 1 Kruger NP (Southern Parts) 24.3.

Red-backed Shrike *Lanius collurio*

(4) 1 Kruger NP - Skukuza / Lower Sabie Road 21.3 and up to 1 Kruger NP (Southern Parts) 22-24.3.

Lesser Grey Shrike *Lanius minor*

(1) 1 Kruger NP (Southern Parts) 22.3.

Southern Fiscal *Lanius collaris*

(1) 1 ALZU Petroport N4 25.3.

Old World Orioles Oriolidae**Black-headed Oriole** *Oriolus larvatus larvatus*

(2) 1 Kruger NP (Southern Parts) 22.3 and 1 Kruger NP - Berg-en-Dal 24.3.

Drongos Dicruridae**Fork-tailed Drongo** *Dicrurus adsimilis*

(4) 1 Kruger NP - Skukuza / Lower Sabie Road 21.3, 1 Kruger NP (Southern Parts) 22.3, 1 Kruger NP - Skukuza / Lower Sabie Road 23.3 and 1 Kruger NP (Southern Parts) 24.3.

Monarch Flycatchers Monarchidae**African Paradise Flycatcher** *Terpsiphone viridis*

(1) 1 Kruger NP (Southern Parts) 24.3.

Crows, Jays, and Magpies *Corvidae*

- Cape Crow** *Corvus capensis capensis*
 (1) 1 ALZU Petroport N4 21.3.
- Pied Crow** *Corvus albus*
 (1) 1 ALZU Petroport N4 21.3.

Chickadees and Tits *Paridae*

- Southern Black Tit** *Melaniparus niger*
 (3) 1 Kruger NP (Southern Parts) 22.3, 1 Kruger NP - Skukuza / Lower Sabie Road 23.3 and 1 Kruger NP (Southern Parts) 24.3.

Penduline Tits *Remizidae*

- Grey Penduline Tit** *Anthoscopus caroli hellmayri*
 (1) 1 Kruger NP (Southern Parts) 24.3.

Nicator *Nicatoridae*

- Eastern Nicator** *Nicator gularis*
 (1) 1 Kruger NP - Berg-en-Dal 24.3.

Larks *Alaudidae*

- Sabota Lark** *Calendulauda sabota*
 (2) 1 Kruger NP (Southern Parts) 22.3 and 1 Kruger NP (Southern Parts) 24.3.
- Rufous-naped Lark** *Mirafraga africana*
 (1) 1 Kruger NP (Southern Parts) 22.3.

Bulbuls *Pycnonotidae*

- Dark-capped Bulbul** *Pycnonotus tricolor layardi*
 (3) 1 Kruger NP - Skukuza / Lower Sabie Road 21.3, 1 Kruger NP (Southern Parts) 22.3 and 1 Kruger NP (Southern Parts) 24.3.
- Sombre Greenbul** *Andropadus importunus*
 (2) 1 Kruger NP (Southern Parts) 23.3 and 1 Kruger NP (Southern Parts) 24.3.
- Terrestrial Brownbul** *Phyllastrephus terrestris*
 (1) 1 Kruger NP - Berg-en-Dal 25.3.

Swallows *Hirundinidae*

- Barn Swallow** *Hirundo rustica rustica*
 (2) 1 Kruger NP (Southern Parts) 22.3 and 1 Kruger NP (Southern Parts) 23.3.
- Wire-tailed Swallow** *Hirundo smithii smithii*
 (2) 1 Kruger NP (Southern Parts) 22.3 and 1 Kruger NP (Southern Parts) 23.3.
- Common House Martin** *Delichon urbicum*
 (1) 1 Kruger NP (Southern Parts) 23.3.
- Lesser Striped Swallow** *Cecropis abyssinica unitatis*
 (1) 1 Kruger NP - Skukuza / Lower Sabie Road 21.3.
- Red-breasted Swallow** *Cecropis semirufa semirufa*
 (1) 1 Kruger NP (Southern Parts) 22.3.

Crombees, African warblers *Macrosphenidae***Long-billed Crombec***Sylvietta rufescens*

(1) 1 Kruger NP (Southern Parts) 22.3.

Cisticolas and Allies *Cisticolidae***Rattling Cisticola***Cisticola chiniana*

(3) 1 Kruger NP - Skukuza / Lower Sabie Road 21.3, 1 Kruger NP (Southern Parts) 22.3 and 1 Kruger NP (Southern Parts) 24.3.

Yellow-breasted Apalis*Apalis flavida*

(2) 1 Kruger NP - Berg-en-Dal 24.3 and 1 Kruger NP - Berg-en-Dal 25.3.

Green-backed Camaroptera*Camaroptera brachyura*

(1) 1 Kruger NP (Southern Parts) 22.3.

Stierling's Wren-Warbler*Calamonastes stierlingi pintoii*

(1) 1 Kruger NP (Southern Parts) 24.3.

Laughingthrushes *Leiothrichidae***Arrow-marked Babbler***Turdoides jardineii jardineii*

(2) 1 Kruger NP (Southern Parts) 22.3 and 1 Kruger NP (Southern Parts) 24.3.

Starlings *Sturnidae***Common Myna***Acridotheres tristis tristis*

(1) 1 ALZU Petroport N4 21.3.

Cape Starling*Lamprotornis nitens*

(4) 1 Kruger NP - Skukuza / Lower Sabie Road 21.3 and up to 1 Kruger NP (Southern Parts) 22-24.3.

Greater Blue-eared Starling*Lamprotornis chalybaeus nordmanni*

(1) 1 Kruger NP (Southern Parts) 22.3.

Burchell's Starling*Lamprotornis australis*

(2) 1 Kruger NP (Southern Parts) 22.3 and 1 Kruger NP (Southern Parts) 23.3.

Pied Starling*Lamprotornis bicolor*

(1) 1 ALZU Petroport N4 21.3.

Red-winged Starling*Onychognathus morio morio*

(1) 1 Kruger NP - Skukuza / Lower Sabie Road 21.3.

Oxpeckers *Buphagidae***Red-billed Oxpecker***Buphagus erythrorhynchus*

(4) 1 Kruger NP - Skukuza / Lower Sabie Road 21.3 and up to 1 Kruger NP (Southern Parts) 22-24.3.

Thrushes and Allies *Turdidae***Kurrichane Thrush***Turdus libonyana*

(1) 1 Kruger NP (Southern Parts) 23.3.

Old World Flycatchers *Muscicapidae***Grey Tit-Flycatcher***Myioparus plumbeus*

(1) 1 Kruger NP (Southern Parts) 24.3.

Spotted Flycatcher*Muscicapa striata*

(1) 1 Kruger NP (Southern Parts) 24.3.

Ashy Flycatcher

Muscicapa caeruleascens

(1) 1 Kruger NP - Berg-en-Dal 25.3.

White-throated Robin-Chat

Cossypha humeralis

(2) 1 Kruger NP (Southern Parts) 22.3 and 1 Kruger NP (Southern Parts) 23.3.

White-browed Robin-Chat

Cossypha heuglini

(2) 1 Kruger NP (Southern Parts) 22.3 and 1 Kruger NP - Berg-en-Dal 25.3.

Mocking Cliff Chat

Thamnolaea cinnamomeiventris

(1) 1 Kruger NP - Skukuza / Lower Sabie Road 21.3.

Sunbirds and Spiderhunters Nectariniidae

Collared Sunbird

Hedydipna collaris

(2) 1 Kruger NP (Southern Parts) 22.3 and 1 Kruger NP - Berg-en-Dal 24.3.

Scarlet-chested Sunbird

Chalcomitra senegalensis gutturalis

(2) 1 Kruger NP - Skukuza / Lower Sabie Road 22.3 and 1 Kruger NP - Skukuza / Lower Sabie Road 23.3.

White-bellied Sunbird

Cinnyris talatala

(1) 1 Kruger NP (Southern Parts) 22.3.

Old World Sparrows Passeridae

House Sparrow

Passer domesticus

(2) 1 ALZU Petroport N4 21.3 and 1 Kruger NP (Southern Parts) 23.3.

Southern Grey-headed Sparrow

Passer diffusus

(1) 1 Kruger NP (Southern Parts) 22.3.

Weavers and Allies Ploceidae

Red-billed Buffalo Weaver

Bubalornis niger niger

(1) 1 Kruger NP (Southern Parts) 22.3.

Southern Masked Weaver

Ploceus velatus

(2) 1 ALZU Petroport N4 21.3 and 1 Kruger NP (Southern Parts) 22.3.

Red-billed Quelea

Quelea quelea lathamii

(1) 1 Kruger NP (Southern Parts) 22.3.

Southern Red Bishop

Euplectes orix

(2) 1 Kruger NP - Skukuza / Lower Sabie Road 21.3 and 1 ALZU Petroport N4 25.3.

White-winged Widowbird

Euplectes albonotatus albonotatus

(2) 1 Kruger NP - Skukuza / Lower Sabie Road 21.3 and 1 Kruger NP (Southern Parts) 22.3.

Long-tailed Widowbird

Euplectes progne progne

(1) 1 ALZU Petroport N4 25.3.

Waxbills and Allies Estrildidae

Green-winged Pytilia

Pytilia melba melba

(1) 1 Kruger NP (Southern Parts) 22.3.

Red-headed Finch

Amadina erythrocephala

(1) 1 Kempton Park 21.3.

Cut-throat Finch

Amadina fasciata

(1) 1 Kruger NP (Southern Parts) 22.3.

Red-billed Firefinch

Lagonosticta senegala rendalli

(1) 1 Kruger NP (Southern Parts) 22.3.

Jameson's Firefinch

Lagonosticta rhodopareia jamesoni

(1) 1 Kruger NP (Southern Parts) 22.3.

Blue Waxbill

Uraeginthus angolensis

(3) 1 Kruger NP - Skukuza / Lower Sabie Road 21.3, 1 Kruger NP (Southern Parts) 22.3 and 1 Kruger NP (Southern Parts) 24.3.

Indigobirds Viduidae

Dusky Indigobird

Vidua funerea funerea

(1) 1 Kruger NP (Southern Parts) 22.3.

Pin-tailed Whydah

Vidua macroura

(3) 1 Kruger NP - Skukuza / Lower Sabie Road 21.3, 1 Kruger NP (Southern Parts) 22.3 and 1 Kruger NP (Southern Parts) 23.3.

Long-tailed Paradise Whydah

Vidua paradisaea

(3) 1 Kruger NP - Skukuza / Lower Sabie Road 21.3, 1 Kruger NP (Southern Parts) 23.3 and 1 Kruger NP (Southern Parts) 24.3.

Wagtails and Pipits Motacillidae

Cape Wagtail

Motacilla capensis capensis

(1) 1 ALZU Petroport N4 21.3.

African Pied Wagtail

Motacilla aguimp

(4) Up to 1 Kruger NP (Southern Parts) 22-24.3 and 1 Kruger NP - Berg-en-Dal 25.3.

Yellow-throated Longclaw

Macronyx croceus vulturinus

(1) 1 Kruger NP (Southern Parts) 24.3.

Long-billed Pipit

Anthus similis

(1) 1 Kruger NP (Southern Parts) 24.3.

Finches, Euphonias Fringillidae

Yellow-fronted Canary

Crithagra mozambica

(2) 1 Kruger NP (Southern Parts) 22.3 and 1 Kruger NP (Southern Parts) 24.3.

Buntings, Sparrows and Allies Emberizidae

Golden-breasted Bunting

Emberiza flaviventris

(2) 1 Kruger NP (Southern Parts) 22.3 and 1 Kruger NP (Southern Parts) 24.3.

Mammals (28 in total: 28 seen)

Status codes: E = Endemic, NE = Near-endemic, I = Introduced

IUCN codes: CR = Critically endangered, EN = Endangered, VU = Vulnerable, EW = Extinct in the Wild, NT = Near Threatened, DD = Data Deficient

Elephants *Elephantidae***African Elephant***Loxodonta africana*

(5) 1 Kruger NP - Skukuza / Lower Sabie Road 21.3, 1 Kruger NP - Skukuza / Lower Sabie Road 22.3, 1 Kruger NP (Southern Parts) 23.3, 1 Kruger NP (Southern Parts) 24.3 and 1 Kruger NP - Berg-en-Dal 25.3.

Old World monkeys *Cercopithecidae***Vervet***Chlorocebus pygerythrus*

(2) 1 Kruger NP - Skukuza / Lower Sabie Road 22.3 and 1 Kruger NP (Southern Parts) 23.3.

Chacma Baboon*Papio ursinus ursinus*

(4) 1 Kruger NP - Skukuza / Lower Sabie Road 21.3, 1 Kruger NP (Southern Parts) 22.3, 1 Kruger NP (Southern Parts) 23.3 and 1 Kruger NP - Berg-en-Dal 25.3.

Rabbits, Hares *Leporidae***Scrub Hare***Lepus saxatilis*

(3) 1 Kruger NP - Skukuza / Lower Sabie Road 22.3, 1 Kruger NP (Southern Parts) 23.3 and 1 Kruger NP (Southern Parts) 24.3.

Squirrels *Sciuridae***Smith's Bush Squirrel***Paraxerus cepapi*

(4) 1 Kruger NP - Skukuza / Lower Sabie Road 21.3 and up to 1 Kruger NP (Southern Parts) 22-24.3.

Cats *Felidae***Cheetah***Acinonyx jubatus jubatus*

(1) 1 Kruger NP (Southern Parts) 23.3.

Lion*Panthera leo leo*

(2) 1 Kruger NP (Southern Parts) 22.3 and 1 Kruger NP (Southern Parts) 24.3.

Leopard*Panthera pardus pardus*

(3) 1 Kruger NP - Skukuza / Lower Sabie Road 21.3, 1 Kruger NP (Southern Parts) 23.3 and 1 Kruger NP (Southern Parts) 24.3.

Mongoose *Herpestidae***Common Dwarf Mongoose***Helogale parvula*

(2) 1 Kruger NP - Skukuza / Lower Sabie Road 21.3 and 1 Kruger NP (Southern Parts) 24.3.

Slender Mongoose*Herpestes sanguineus*

(2) 1 Kruger NP (Southern Parts) 22.3 and 1 Kruger NP (Southern Parts) 24.3.

Hyaenas, Aardwolf *Hyaenidae***Spotted Hyaena***Crocuta crocuta*

(3) 1 Kruger NP - Skukuza / Lower Sabie Road 22.3, 1 Kruger NP (Southern Parts) 23.3 and 1 Kruger NP (Southern Parts) 24.3.

Civets, Genets *Viverridae***Common Genet***Genetta genetta*

(1) 1 Kruger NP - Skukuza / Lower Sabie Road 22.3.

Zebras, Horse, Asses *Equidae***Plains Zebra***Equus quagga*

(4) Up to 1 Kruger NP (Southern Parts) 22-24.3 and 1 Kruger NP - Berg-en-Dal 25.3.

Rhinoceroses *Rhinocerotidae***White Rhinoceros***Ceratotherium simum simum*

(4) Up to 1 Kruger NP (Southern Parts) 22-24.3 and 1 Kruger NP - Berg-en-Dal 25.3.

Pigs *Suidae***Common Warthog***Phacochoerus africanus sundevallii*

(3) 1 Kruger NP - Skukuza / Lower Sabie Road 21.3, 1 Kruger NP (Southern Parts) 23.3 and 1 Kruger NP (Southern Parts) 24.3.

Hippopotamuses *Hippopotamidae***Hippopotamus***Hippopotamus amphibius capensis*

(2) 1 Kruger NP (Southern Parts) 22.3 and 1 Kruger NP (Southern Parts) 23.3.

Cattle, Antelopes, Sheep, Goats *Bovidae***Impala***Aepyceros melampus melampus*

(5) 1 Kruger NP - Skukuza / Lower Sabie Road 21.3, up to 1 Kruger NP (Southern Parts) 22-24.3 and 1 Kruger NP - Berg-en-Dal 25.3.

Common Wildebeest*Connochaetes taurinus*

(2) 1 Kruger NP (Southern Parts) 23.3 and 1 Kruger NP (Southern Parts) 24.3.

Waterbuck*Kobus ellipsiprymnus ellipsiprymnus*

(3) 1 Kruger NP - Skukuza / Lower Sabie Road 22.3, 1 Kruger NP (Southern Parts) 23.3 and 1 Kruger NP (Southern Parts) 24.3.

Klipspringer*Oreotragus oreotragus*

(2) 1 Kruger NP - Skukuza / Lower Sabie Road 21.3 and 1 Kruger NP (Southern Parts) 23.3.

Steenbok*Raphicerus campestris campestris*

(3) 1 Kruger NP - Skukuza / Lower Sabie Road 22.3, 1 Kruger NP (Southern Parts) 23.3 and 1 Kruger NP (Southern Parts) 24.3.

Common Duiker*Sylvicapra grimmia*

(1) 1 Kruger NP (Southern Parts) 24.3.

African Buffalo*Syncerus caffer caffer*

(2) 1 Kruger NP (Southern Parts) 22.3 and 1 Kruger NP (Southern Parts) 24.3.

Nyala*Tragelaphus angasii*

(1) 1 Kruger NP (Southern Parts) 22.3.

Bushbuck*Tragelaphus scriptus*

(3) Up to 1 Kruger NP (Southern Parts) 22-24.3.

Greater Kudu*Tragelaphus strepsiceros*

(3) 1 Kruger NP - Skukuza / Lower Sabie Road 21.3, 1 Kruger NP (Southern Parts) 22.3 and 1 Kruger NP (Southern Parts) 23.3.

Giraffe, Okapi *Giraffidae***Giraffe***Giraffa camelopardalis giraffa*

(5) 1 Kruger NP - Skukuza / Lower Sabie Road 21.3, up to 1 Kruger NP (Southern Parts) 22-24.3 and 1 Kruger NP - Berg-en-Dal 25.3.

Old World Fruit Bats *Pteropodidae*

Wahlberg's Epauletted Fruit Bat *Epomophorus wahlbergi*

(2) 1 Kruger NP - Skukuza / Lower Sabie Road 21.3 and 1 Kruger NP - Skukuza / Lower Sabie Road 22.3.

Reptiles (7 in total: 7 seen)

Status codes: E = Endemic, NE = Near-endemic, I = Introduced

IUCN codes: CR = Critically endangered, EN = Endangered, VU = Vulnerable, EW = Extinct in the Wild, NT = Near Threatened, DD = Data Deficient

Tortoises *Testudinidae*

Leopard Tortoise *Stigmochelys pardalis*

(2) 1 Kruger NP - Skukuza / Lower Sabie Road 23.3 and 1 Kruger NP (Southern Parts) 24.3.

Afro-American Sideneck Turtles *Pelomedusidae*

Helmeted Turtle *Pelomedusa subrufa nigra*

(2) 1 Kruger NP - Skukuza / Lower Sabie Road 21.3 and 1 Kruger NP (Southern Parts) 24.3.

Agamas *Agamidae*

Southern Tree Agama *Acanthocercus atricollis atricollis*

(3) 1 Kruger NP - Skukuza / Lower Sabie Road 22.3, 1 Kruger NP - Berg-en-Dal 24.3 and 1 Kruger NP - Berg-en-Dal 25.3.

Geckos *Gekkonidae*

House Gecko *Hemidactylus mabouia*

(1) 1 Kruger NP - Skukuza / Lower Sabie Road 21.3.

Skinks *Scincidae*

Variable Skink *Trachylepis varia*

(1) 1 Kruger NP - Berg-en-Dal 24.3.

Monitor Lizards *Varanidae*

Nile Monitor *Varanus niloticus*

(1) 1 Kruger NP (Southern Parts) 23.3.

Crocodiles and relatives *Crocodylidae*

Nile Crocodile *Crocodylus niloticus cowiei*

(4) 1 Kruger NP - Skukuza / Lower Sabie Road 21.3, 1 Kruger NP (Southern Parts) 22.3, 1 Kruger NP (Southern Parts) 23.3 and 1 Kruger NP - Berg-en-Dal 24.3.

Rockjumper Birding Tours

Worldwide Birding Adventures
PO Box 13972,
Cascades, 3202
South Africa

Tel: +27 33 394 0225

Fax: +27 88 033 394 0225

Email: info@rockjumperbirding.com

Alternative email: rockjumperbirding@yahoo.com

Website: www.rockjumperbirding.com